



Lewis administration addresses change in Trump’s U.S.immigration policies

LUNA SCHAFER
NEWS EDITOR

The new Trump administration’s main focus has been to deport a broad range of undocumented individuals who are under suspicion of criminal activities. The operation has been joined by multiple federal agencies, including the FBI; U.S. Marshals Service; the Drug Enforcement Administration; the Bureau of Alcohol, Tobacco, Firearms and Explosives. The Immigration Customs Enforcement, also known as ICE, has started their operation in the Chicago area.

In 1985, Chicago Mayor Harold Washington issued an executive order barring the city employees from enforcing federal immigration laws. In 2012, Chicago officially became a sanctuary city when Mayor Rahm Emanuel was in office.

Mayor Emanuel enacted the Welcoming City Ordinance. The act protects undocumented immigrants by prohibiting

local law enforcement from detaining individuals based solely on their immigration status or cooperating with federal immigration authorities unless mandated by a criminal warrant or specific circumstances.

However, Chicago is not the only sanctuary city in the United States. Other cities such as New York and Denver have been providing asylum to thousands of immigrants.

Chicago Mayor Brandon Johnson has publicly urged citizens of the Chicago area to know their constitutional rights. He also stated that the city’s police had no involvement in these operations.

As the situation evolves, Lewis University has provided information to everyone under their wing.

Currently, the university is taking action to inform all its students about the possibility of the federal agency having an impact on the student body. More specifically, the Diversity, Equity, & Inclusion department

of the school has reached out to all students via email, with information about training and immigration-related support.

The email encourages the students to join the Office of Diversity to do UndocuAlly training sessions on Zoom throughout the next couple of weeks.

Within the email, Shireen Roshanravan, the Vice President for Diversity explains that the recent policies related to the Immigration Customs Enforcement (ICE), allows the primary investigative arm of the U.S. Department of Homeland Security (DHS) to enter schools and universities to investigate.

The continuation of the email states that ICE cannot enter non-public properties without consent, a signed federal judicial warrant, or exigent circumstances (e.g., a security threat). If ICE agents persist without meeting these conditions, the school mandates students not interfere. However, they insist on calling Lewis University Police or, for Chicago campus loca-

UndocuAlly Trainings & Immigration-Related Support

THURS
20
FEB

12:30 p.m. – 2:00 p.m.
on Zoom

12:00 p.m. – 1:30 p.m.
on Zoom

WED
26
FEB



Scan the QR code to join on Zoom

ALEXIS PRAGIDES / GRAPHIC DESIGNER

tions, contact the Chicago Police Department. The email explains that individuals have the constitutional right to remain silent and request an attorney.

In a final statement, the Of-

fice of Diversity states, “Lewis University remains steadfast in our commitment to care for and support all students and community members regardless of immigration status.”

Lewis Criminal Justice masters program ranks top 25 across the nation

BRYNN KOEHLER
NEWS & CAMPUS LIFE
REPORTER

According to the U.S. News and World Report, Lewis ranks among the top 25 criminal justice masters programs in the country, tying for 24th out of 96 programs with the University of Alabama at Birmingham and the University of North Texas.

The rankings are determined by scoring faculty credentials and training (88/100), services and technology (66/100), student excellence (87/100) and engagement (68/100). Overall, Lewis’ score of 73/100 puts it in the top 25% of 2025 criminal justice masters programs in the country.

As of the most recent information from Data USA, criminal justice was the second most

popular degree with 113 awarded in 2022, just behind computer science with 114.

Lewis’ criminal justice masters programs are available all in person or online, which allows each student to pursue their education while still attending to the needs of their lives outside of schooling.

Lewis offers two M.S. programs available from the Justice, Law and Public Safety Department: criminal justice and public safety administration. Both programs, whether in person and online, give students access to an expansive array of post-graduate opportunities.

According to the Lewis University website, many who pursue a criminal justice M.S. go into high level positions in offices such as the FBI, Homeland Security, Secret Service, and



ALEXIS PRAGIDES / GRAPHIC DESIGNER

both local and state police departments. Lewis has graduated over 60 public safety heads, including police and fire chiefs, as well as village managers.

Dr. Stephen Sherwin, assis-

tant professor of justice, law and public safety studies, has been at Lewis since 2007, becoming a full-time professor in 2016. During his time, he’s seen and been involved with the success and growth of Lewis criminal justice students.

Sherwin describes the program, “well grounded with people who have a great experience and perspective of law enforcement, and people who have various levels of work experience and responsibilities that they teach,” calling it a “plethora of quality instruction and instructors.”

The experience, expertise and connections of the faculty, as well as Lewis’ membership in organizations like Academic Alliance of the FBI National Academy Associates (FBINAA) and National Fraternal Order of Po-

lice University (NFOPU) offers students plenty of career opportunities and opens a career path for students post graduation.

Sherwin continues, saying “Because of the experience, because of the camaraderie, there’s a great bonding that takes place.” The program contains several experienced faculty and education and encourages relationships that further aid and guide students to their careers.

Lewis’ ranking at 24th in the country for criminal justice masters programs in 2025 is 13 places higher than its place in 2024, indicating the growing success the program has had this past year. Students are allowed to tailor their education to their unique needs, making it an accessible program to more people.

Trump administration temporarily freezes Federal Funding

LUNA SCHAFER
NEWS EDITOR

A recent memo issued by the Trump administration, described a potential freeze on certain federal funding streams, a move that could have significant repercussions across various sectors, including healthcare research, education programs, and initiatives related to equity, transgender rights and environmental sustainability.

The event took place early morning of Monday, Jan. 27. The Trump administration issued a directive through the Office of Management and Budget (OMB) to temporarily pause all federal financial assistance, including grants and loans, effective Jan. 28. The pause aimed to ensure that federal funds were not supporting programs promoting “Marxist equity,” “transgenderism” or “Green New Deal social engineering policies.”

The freeze excluded direct assistance to individuals, such



Financil aid office on first floor of LRC.

VANJA BOGDANOVIC / PHOTOGRAPHER

as Social Security and Medicare. However, it led to widespread confusion and concern among universities, nonprofits and state and local governments that rely on federal funding. Many feared disruptions to essential services and programs since it also affected the loans taken from alternative sources.

The pause of federal assistance was set to start at 5 p.m. EST the following day.

However, in response to legal challenges, U.S. District Judge Loren AliKhan temporarily blocked the funding freeze on Jan. 28, just before it was set to take effect. The block preserved federal disbursements until at least Feb. 3, allowing for further litigation.

On Jan. 28, Dr. William Chura, the Vice Provost of Research and Educational Effectiveness at Lewis University sent out an email with the

subject line “Potential Impact Federal Funding Changes.” The information sent to the Lewis University community contained steps the school is taking to prevent this action from affecting students who count on federal aid.

While federal funding pauses have occurred under previous administrations, the latest directive has sparked concerns about its potential impact on ongoing projects and institutions, including Lewis University. Officials at the university are currently assessing the full scope of these changes and their possible effects on campus programs.

Despite the uncertainty, Education Department officials have clarified that key forms of direct financial assistance, such as federal student loans and Pell Grants, will remain unaffected. Additionally, the majority of student scholarships at Lewis University tied to federal grants have already been distributed, minimizing immediate disruptions for stu-

dents.

University leaders have assured students and faculty that they will take all necessary steps to mitigate the impact of these funding changes while upholding the institution’s mission of providing a high-quality Lasallian education rooted in Catholic values. The administration also reaffirmed its commitment to maintaining a supportive and inclusive environment for all community members.

“We will do our utmost to minimize the impact of these decisions on our students and the University while maintaining our commitment to our Mission of providing an exceptional Lasallian education in the Catholic tradition that prepares students to be ethical leaders and responsible citizens. We also reaffirm our commitment to maintaining a Sanctified Zone where all community members feel valued, respected, and safe,” stated Chura.

Increase of opportunities for international students at Lewis

EMMA BERTOTTO
ASST. NEWS EDITOR

Lewis University has seen an increase in the number of foreign students enrolled during the spring semester of the current year. According to an email from the international Students and Services Department with the subject line “New F-1 Visa International Student Orientations This Week!”, during the early weeks of January, the university received around 200 new graduate students and 24 international undergraduates.

Maxwell Mo, an International Admission Graduate Assistant, reflects on the growing international student population. “Over the past few years, Lewis has provided more and more services and support to our international students and I am grateful for all the opportunities.”

One reason for the recent rise in enrollment is affordability. Lewis can be considered one of the most affordable colleges in the Chicagoland area. “Lewis is

affordable compared to other colleges in the Chicagoland area, and Lewis is a supportive community to all of our students,” explained Mo.

Another key part of student life for many international students is the fact that they are able to obtain an on-campus job. Maxwell notes the value of this experience by saying, “A lot of international students want to work on campus because it adds to their working experience in the U.S. I started my first student worker job fixing computers in the Office of Technology. It made a great impact in my life, and it taught me a lot about work ethic and being a good communicator.”

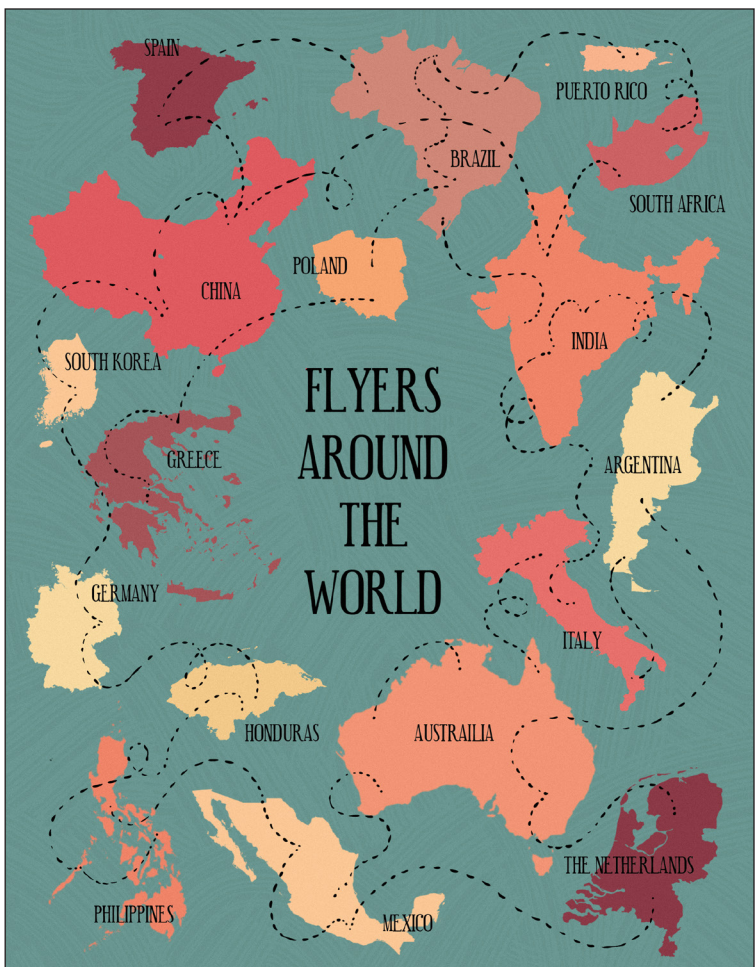
It is also worth noting the challenges international students face. “There are limited student employee opportunities and it becomes harder to get a job on campus,” explained Maxwell. At the same time, “A lot of the Graduate Assistant roles are filled by international students, but that is because GAs need to be full-time students. The

student visa also requires full-time study, while many American graduate students study part time.”

He also explains how with an increasing number of international graduates, a lot of new GA roles came too. This allows new services and support systems to be introduced on campus benefiting all residents and commuters.

“Our success coaches and academic advisors are doing a good job supporting our international students academically. We also have our international student services office that helps students with all the visa related questions.” Mo explained. All of these are key to a good academic journey. With guidance and assistance, students can thrive in their studies and maintain their visas with a student status. This support makes students feel more secure throughout their time at the university.

Reflecting on the changes since his arrival, Maxwell says, “I started at Lewis in 2019 and we did not have too many international students



*Not all origins represented.

ALEXIS PRAGIDES / GRAPHIC DESIGNER

at the time. Over the past few years, Lewis is providing more and more services and

support to our international students and I am grateful for all the opportunities.”

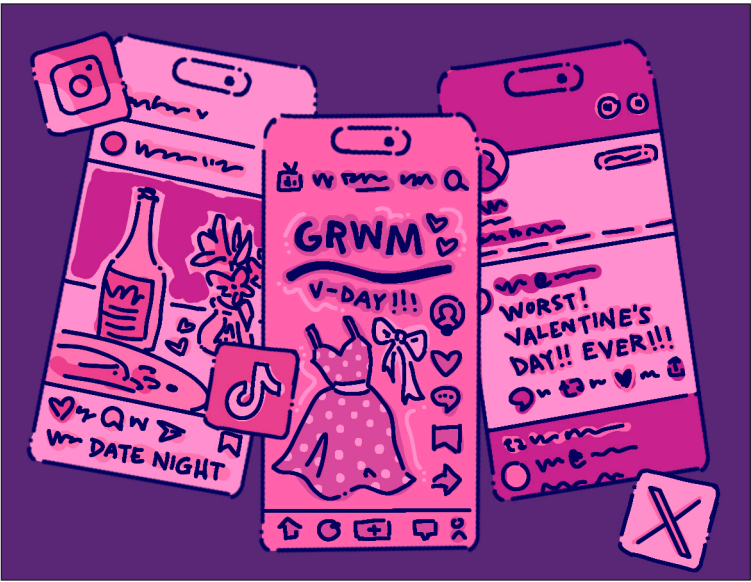
Social media is ruining Valentine’s Day

JADA LAW
OPINIONS EDITOR

Whether you love or hate Valentine’s Day, it’s always a hard holiday to ignore. If you open any social media platform, you’ll see countless posts of couple’s content ranging from huge flower bouquets to lavishly decorated hotel rooms. As a result, it can evoke a wide range of emotions, causing people to compare their love life to what they see online.

Valentine’s Day is annually celebrated on Feb. 14 and was originally created to honor a martyr named Valentine by having a feast. However, as the years went by the day of honor became a day to also celebrate romance in cultural and religious settings in parts of the world.

A holiday that was once filled with so much love has now become a source of negative discourse online. It has caused many people to compare their relationships to others, critiquing what gifts are acceptable to buy your partner and even making people feel pressured into thinking their



ALEXIS PRAGIDES / GRAPHIC DESIGNER

gestures are not big enough for their significant other.

Usually, typical gifts on Valentine’s Day consist of chocolates, a card and maybe even roses. With so many influencers online creating posts of them on extravagant trips, receiving pricey gifts and getting huge romantic gestures, the concept of an affordable gift has been completely forgotten. Viewers of that content begin to believe that this is the true reality of Valentine’s Day. This is not the case as it is meant to

celebrate love and connection, not a consumerism contest.

To make matters worse, the main people affected by these unrealistic Valentine’s Day posts are mostly teens and young adults. They are led to believe that love is heavily based on money and the perfect Instagram post, rather than a true connection between people who love and cherish each other.

Although social media presents a lot of negative content that can easily be consumed,

there is also good that can come out of Valentine’s Day posts. For example, it can help people find inspiration on what types of gifts to make or buy for the person they love. It has also transformed the holiday into a celebration not just for couples, but for friendships as well, like Galentine’s Day.

Social media can remind people that they are loved no matter if they are in a relationship or not. Expressing gratitude for the people you care about by posting them on your account can create a positive impact, making you and the person you posted feel truly loved and appreciated by the gesture.

Valentine’s Day posts on social media can be extremely misleading and make you forget the true definition of what love is. There is no benefit to comparing yourself to others online and will only leave damage to your mental state. It’s important to use social media in a way that is positive to you because at the end of the day the posts you see online are just a small glimpse into that person’s life.

IRENA ILIC
EDITOR-IN-CHIEF
irenaalic@lewisu.edu

TYRA CORPUZ
MANAGING EDITOR
tyrarayavcorpuz@lewisu.edu

ANABEL AGUILAR
WEBMASTER
anabelaguilarramir@lewisu.edu

LUNA SCHAFER
NEWS EDITOR
lunacuevaschafer@lewisu.edu

EMMA BERTOTTO
ASST. NEWS EDITOR
emmabertotto@lewisu.edu

JADA LAW
OPINIONS EDITOR
jadaalaw@lewisu.edu

JOHN COLAYO
ASST. OPINIONS EDITOR
johnjeusgcolayo@lewisu.edu

RAYNE GRABOWSKI
TEMPO EDITOR
raynegrabowski@lewisu.edu

JADEN ELMORE
ASST. TEMPO EDITOR
jadenelmore@lewisu.edu

STEPHANIE AGUILAR
CAMPUS LIFE EDITOR
stephaniekagUILAR@lewisu.edu

DELANEY COLEMAN
ASST. CAMPUS LIFE EDITOR
delaneyscOLEMAN@lewisu.edu

GRANT DORSEY
SPORTS EDITOR
giannambelcastro@lewisu.edu

KREE NUNNALLY
ASST. SPORTS EDITOR
kreejnunnally@lewisu.edu

JACOB GUERNON
CAMPUS LIFE & OPINIONS COPY EDITOR
jacobqguernon@lewisu.edu

JOANNALY SANCHEZ
TEMPO & NEWS COPY EDITOR
joannalysanchez@lewisu.edu

JADA HARVEY
SPORTS COPY EDITOR
jadalharvey@lewisu.edu

STEPHANIE AGUILAR
ONLINE COPY EDITOR
stephaniekagUILAR@lewisu.edu

KALEY MURRAY
LAYOUT EDITOR
kaleymmurray@lewisu.edu

GIANNA CIACCIA
LAYOUT EDITOR
giannaciaccia@lewisu.edu

DANA EUSKE
LAYOUT EDITOR
danameuske@lewisu.edu

ALEXIS PRAGIDES
GRAPHIC DESIGNER
alexispragides@lewisu.edu

DELANEY COLEMAN
SOCIAL MEDIA COORDINATOR
delaneyscOLEMAN@lewisu.edu

VANJA BOGDANOVIC
NEWS & CAMPUS LIFE PHOTOGRAPHER
vanjabogdanovic@lewisu.edu

MATTHEW CARLSON
SPORTS & TEMPO PHOTOGRAPHER
mattcarlson2003@gmail.com

CHRISTIAN GOODE
SPORTS CONTRIBUTOR
christianlgoode@lewisu.edu

BRYNN KOEHLER
NEWS & CAMPUS LIFE REPORTER
brynndkoeHLER@lewisu.edu

SHANNON MASHEK
MODERATOR
masheks@lewisu.edu

Staff editorial: Criminal Justice in the spotlight

IRENA ILIC
EDITOR-IN-CHIEF

Lewis University has long been known for its aviation and nursing programs. Yet, the university excels in other areas often not highlighted as much as they should be.

The Justice, Law and Public Safety Studies (JLPSS) department has a long standing history of receiving numerous awards and accreditations for scoring in the top 25 degree programs in the Midwest. The Criminal Justice program is one of the programs that gets overshadowed. The program is constantly evolving and paying special attention to current societal events in order to adapt and enhance the curriculum.

The department is led by staff and faculty members with experience covering a full span of careers related to criminal justice as reported in the front

page article, “Lewis ranked in top 25 Criminal Justice programs in the U.S” by Brynn Koehler. These staff members work at Lewis while continuing their Criminal Justice passions and staying in the field outside of Lewis. Staff members with a lot of experience are essential to forming the type of students that graduate from Lewis. These staff members are able to share stories and give advice to students making them stand out from other applicants when job hunting. Further, this advantage provides students with job opportunities and openings they never knew existed, expanding the capacity of the student.

Not only are the staff monumental in helping students with jobs, but so are the career fairs that the Criminal Justice department hosts each semester. Students have the opportunity to get hired and learn more about various jobs and intern-



Criminal Justice program in Justice, Law and Public Safety Studies.
VANJA BOGDANOVIC / PHOTOGRAPHER

ships they might be interested in. With the current trends in the job market, career fairs such as these are eye-opening and actually get students hired. The Criminal Justice career fair often attracts numerous agencies that students have expressed interest in, making it easier for students to get their dream job. Other departments on campus should follow in

these footsteps and create an easier transition for their students post-graduation.

With tools such as these, the Criminal Justice program should be recognized at Lewis as one of the top programs and should receive the credit it’s due. Others have taken notice of the program and it’s time the Lewis community does as well.

Takeaways from Trump’s first week

JOHN COLAYO
ASST. OPINIONS EDITOR

Trump entered the White House with considerable momentum during his inaugural week, promptly fulfilling several campaign commitments while adopting the formalities associated with the presidency. During the initial week of his second term, Trump executed numerous executive orders, engaged in daily communication with the press and employed language against the opposition that raised concerns.

Typically, a new president’s first 100 days in office is a period of daring new national policy. This is their chance to make a statement about their leadership style, priorities and the timeliness with which they would fulfill campaign pledges. In 1933, during Roosevelt’s first 100 days as President, he declared a bank holiday, preventing a catastrophic run on banks. He also removed the United States from the gold standard and passed historic legislation to aid farmers, homeowners and the unemployed.

Consider Obama’s Lilly Ledbetter Fair Pay Act of 2009. The act loosened the statute of limitations for equal-pay lawsuits, expanded the State Children’s



PHOTO CREDIT: ERIC LEE / THE NEW YORK TIMES

President Trump signing one of many executive orders in early days in office.

Health Insurance Program (S-CHIP) and won the approval of a congressional budget resolution during his first 100 days in office.

For the first hundred days of Donald Trump’s second term, what does the first week of his presidency suggest? Trump has already issued a number of executive orders that aim to fulfill campaign pledges, with an emphasis on immigration, eco-

nomics reform and environmental deregulation—three key areas of concern for both him and the Republican Party. On his first day in office, Trump signed a bewildering number of orders. These orders included trying to end birthright citizenship for children of undocumented immigrants, stopping people from getting asylum at the southern border, declaring the crossing of the US-Mexico

border a national emergency, telling federal agencies to look into trade practices, telling the government to see if it’s possible to make an “External Revenue Service” to collect tariffs and duties, pulling the U.S. out of the Paris Agreement and rolling back rules on energy-efficient appliances and pollution from tailpipes.

The administration appears to be planning additional

changes, leaving the long-term consequences uncertain. Courts are now challenging some of the president’s acts, including executive orders. This might provide answers about the president’s constitutional power and other statutes that establish federal agencies. The results of the legal proceedings are yet uncertain.

As expected, the first week was filled with confusion and chaos. In order to fulfill the promise of democracy for everyone, it is imperative that every vote be counted. We must also demand an impartial and inclusive judiciary that serves the public interest. We must also safeguard and appreciate immigrants and refugees from all walks of life. We must reform the criminal-legal system so that it actually protects communities. We must also pave the way for people to invest in their future and select safe and inclusive schools for children. We must ensure that all people can seek out new opportunities without fear of discrimination. We must also ensure that everyone has access to the tools they need to effectively participate in democracy and make meaningful contributions to their communities. To a just, fair, free and inclusive America.

Master’s in ORGANIZATIONAL LEADERSHIP

Getting ahead in business takes time. It takes effort. And it takes education.

At Lewis University, we’re dedicated to offering you an education that will make you a preferred candidate in the job market. One of the ways we’re doing that is through our Master’s in Organizational Leadership program.

This program offers management and leadership skills with a set of in-depth competencies from specific disciplines through industry sought-after stackable micro-credentials. Our Introduction to Change Management course has recently been recognized as an Association of Change Management Professionals (ACMP) Qualified Education Program



course. That means it is aligned to ACMP’s Standard for Change Management® and Adult Education Best Practices, helping to prep you to sit for the CCMP certification exam. Combined with industry alignments with the International Coach Federation, the Association for Talent Development, and others,

we’re positioned to provide you with the skills for an incredible future.

If you feel a master’s degree is more than you need, you can pursue an Organizational Leadership Certificate which also provides valuable micro-credentials to help put you ahead of your peers.

What’s more, as an alum, you may qualify for our Frequent Flyer program which offers a 20% discount on tuition.*

**The tuition rate should be confirmed and verified by the Admissions Counselor at the time of registration. Only one discount may be applied to a program.*



So what are you waiting for?

Contact Graduate Admission Counselor Linda Campbell at (815) 836-5704 or campbeld@lewisu.edu for more information. Or apply today at grad.lewisu.edu/apply.



Artists take a stand at Grammys

TYRA CORPUZ
MANAGING EDITOR

Big night for music lovers on Feb. 2 as comedian Trevor Noah hosted the 67th Annual Grammy Awards on CBS. It was a night filled with lively performances and gratitude but mostly with testaments to hope and change.

Noah did his intro comedy bits, but the biggest emphasis was who the event would be supporting. He encouraged the audience in the room and back home to donate to wildfire relief for the LA wildfires. He revealed all the proceeds from the broadcast would be going to help those in need. CBS had even given their airtime to advertise local businesses heavily affected by the fires.

More than \$7 million was raised from donations from viewers alone with local firefighters being honored at the end of the ceremony. They even allowed two firefighters to present the biggest award of the night, Album of the Year, to Beyoncé.

The singer also won the Grammy for Best Country Album for “Cowboy Carter,” marking her as the first Black person to win a Grammy in the category. Her reaction to the announcement was comical as the look on her face was pure and utter disbelief. These wins marked her 34th and 35th Grammy, keeping her at the top of the chain of winning the most Grammy’s ever.

Doechii won the first award of the night for Best Rap Album, marking her first Grammy and



PHOTO CREDIT: ROBERT GAUTHIER/LOS ANGELES TIMES

Opening performance at the Grammys dedicated to victims and relief for LA wildfires.

the third woman to win in that category. She made an inspiring speech in tears, thanking her mother and speaking directly to young Black girls saying, “Don’t allow anybody to project any stereotypes on you, that tell you that you can’t be here, that you are too dark, not smart enough, too dramatic, too loud...You are exactly who you need to be to be right where you are, and I am a testimony.”

Her award was followed by the Best New Artist set—a string of performances to be remembered. Benson Boone, Doechii, Teddy Swims, Shaboozey and Raye all performed back-to-back. From Boone’s pop power ballad “Beautiful Things” to Doechii’s rap “DENIAL IS A RIVER” the mood changed immediately, shifting from different genres and tem-

pos. Then the mellowing down into Swim’s “Lose Control” and picking up the beat slowly with Shaboozey’s country hit “Tipsy” and ending with Raye’s powerful “Oscar Winning Tears.” Each song choice showcased the newly up-and-coming artists’ stage presence and control of their voices in unique and beautiful ways.

The Best New Artist award went to Chappell Roan, marking her first Grammy as well. Roan graced the stage thankful, determined and vulnerable. She shared her story starting as a struggling artist and being dropped by her label amidst the pandemic, she felt betrayed and abandoned and had no way to support herself. She set down her Grammy to focus on her speech, urging labels to provide artists with health care and liv-

ing wages, ending her speech with, “Labels, we got you, but do you got us?”

Shakira won Best Latin Pop Album for “Las Mujeres Ya No Lloran.” She dedicated her win to “all my immigrant brothers and sisters in this country.” She spoke earlier in the night to LA Times saying, “I, too, have been an immigrant who came to this country with a dream... Latinos, we are an unstoppable force. I will not tire of fighting with them and for them.” She reminded immigrants, “You are loved. You are worth it, and I will always fight for you.”

Herbie Hancock and Cynthia Erivo did a stunning and soulful rendition of Frank Sinatra’s “Fly Me to the Moon” as a tribute to Quincy Jones. Stevie Wonder followed with a beautiful speech on celebrating cultures before

singing “We Are the World” performing with children from schools that were burnt down in the wildfires.

Bruno Mars and Lady Gaga won Best Pop Duo for their song “Die with a Smile.” They thanked and praised each other but Gaga ended their time on stage saying “Trans people deserve love. The queer community deserves to be lifted up. Music is love.”

Kendrick Lamar won Record of the Year for “Not Like Us,” starting his speech by honoring his aunt Sharon who had passed that morning. He dedicated the win to the city and the kids in Palisades and Altadena saying, “This is a true testament that we will continue to restore this city. And we’re gonna keep rocking.” He also won Song of the Year for the same record.

Dr. Dre Global Impact Award went to Alicia Keys for her non-profit organization Keep a Child Alive. The organization is committed to supporting children facing challenging circumstances across the globe. Her speech focused on the importance of diversity, “We’ve seen on this stage talented, hardworking people from different backgrounds with different points of view, and it changes the game. DEI is not a threat, it’s a gift.”

The awards show was a night of honor and accountability. In light of recent world events, it seemed everyone had decided to speak out and speak up, whether it was subtle or completely direct. The night was not just about music, it was about taking a stand.

Nostalgia fills ‘Disney Dreamlight Valley’

RAYNE GRABOWSKI
TEMPO EDITOR

Disney is a common staple of childhood. There are several mediums the company has expanded into—books, movies and TV shows being some of the most popular ones. The familiar characters can often create a sense of nostalgia for people, making their new game, “Disney Dreamlight Valley” a great success.

The game is based in Dreamlight Valley, which is overrun with dark magic. When the player arrives, it is decided that the player is the one who can save the valley from the dark magic once and for all. (Because why would the characters do some of the hard work?) Merlin initially meets the player, but as the game progresses more and more characters are unlocked.

“Disney Dreamlight Valley” is largely quest-based. There are story quests, which focus on the plot with the dark mag-

ic and danger looming over the valley alongside fixing up the valley. Then, there are friendship quests that are unlocked once a certain friendship level is reached with each character. All the characters have their plot line with the player helping them reach their ultimate goal. These plot lines add a drive to the characters’ actions.

Despite being largely quest-based, the game allows a lot of freedom to players. There is lots to do outside of the quests, like discovering new recipes in the kitchen and decorating the valley to perfection (of course, only to tear it down and start again). There is no correct order to complete the game, with little direction given to the player on where to explore. The open world gives players control over their priorities and goals despite the quests given to them.

The game is available on PC, Mac, Nintendo Switch, Play Stations 4 and 5 and Xbox.

The controls in the game have a bit of a learning curve, like any game does. But overall the controls are easily picked up with enough playtime. The player also has an energy bar that grows as more levels are obtained by the player. These levels can be gained by any of the main actions in the game - fishing, digging, mining, foraging and gardening - and by removing dark magic from the valley. The player can either eat food or enter their house to restore energy.

There are seven total areas to unlock within the valley. The Plaza is where the player arrives and is also the location of their house. Some areas have blocked off portions, not allowing the player to access certain areas despite having gotten past the initial barriers. New characters are unlocked upon discovering the different areas and so are progressions in the storyline.

“Disney Dreamlight Valley” was released for early access



PHOTO CREDIT: PUNISHEDBACKLOG.COM

Disney heroes and villains are included in the game.

on Sept. 6, 2022. The game stayed in that state until its full release on Dec. 5, 2023. When it was still early access, the game was free to play. That changed once the full release came out alongside the expansion pack titled “A Rift in Time.” Prices vary across consoles. A second expansion titled “Storybook Vale” was released on Nov. 20, 2024.

The graphics in the game are 3D based, giving the world a more immersive experience. The magic in the game is con-

sistently illustrated, making the graphics enhance the storyline. Each character has a shimmer of magic on them, speaking to the detail the creators went to when producing this game.

“Disney Dreamlight Valley” has enough content to make even the most intense gamer intrigued for months on end. Between the nostalgia and plotline in the game, it is a game all Disney fans should pick up if given the chance.

An adventure through the universe

RAYNE GRABOWSKI
TEMPO EDITOR

To most people, long travel times can be annoying. Spending hours or days in a car can be suffocating and make someone go stir crazy. However, those travel times seem insignificant compared to traveling across the universe like the characters in Timothy Zahn's "The Icarus Plot."

"The Icarus Plot" is a book with several solar systems, all inhabited by humans and aliens alike. Not many people get to travel across it, with those who can afford private travel being even rarer. Only those with specific jobs or extreme wealth can afford this luxury. Luckily for Gregory Roarke and Selene, the main characters of the book, their job as crockets allows them to have their very own spaceship.

Gregory Roarke is a human with a prosthetic left arm. He lost it when he and Selene were bounty hunters, trying to get a particularly difficult bounty. He uses this to his advantage and has several hidden compartments within his new arm. He tends to store knockout pills there in case there are any approaching dangers.

Roarke also quotes his father several times throughout the book, despite the reader never meeting his father. It can be assumed that the father passed away and Roarke is repeating the life lessons he was taught. Some of the quotes are funny while others are more cynical. These quotes often foreshadow Roarke's future actions and plans, for better or worse.

Selene is Kadolian, dictated by her white hair and green skin. She is Gregory's partner. Kadolians are rare but have a heightened sense of smell, being able to detect emotions and other information with just their sense of smell. When Roarke lost his arm, she nearly died from the same attack.

In the book, Roarke and Selene start off getting samples from a new planet, trying to judge its ability for development. Through a wild turn of events, the two get brought back into the world of bounty hunting. Selene more readily accepts this while Roarke is upset but unable to do anything about it as the adventure progresses.

Something Zahn focuses on is the relationship between Roarke and Selene. The two have an unbreakable bond and are will-

ing to go through anything for the other. Time and time again, Roarke's only motivation is Selene. Despite this, the two are more like siblings than a romantic pair. They would go to the ends of the world for each other, which is shown through Zahn's development of these characters. Selene and Roarke make continuous sacrifices to guarantee the other's safety at the sake of their own.

Zahn's choice of making Roarke the narrator makes this science fiction world easier to understand for non-sci-fi readers. Roarke knows just enough about the science of the universe to explain the basics, but doesn't drone on about the incredibly complicated aspects. His limited knowledge allows the story to progress, but Roarke being not fully aware of the higher plans for the world make the plot twists even more unpredictable.

Zahn brings the reader through shocking revelations and deep emotion in "The Icarus Plot." With the entire universe to explore, Roarke and Selene bring both joy and sorrow to a reader's mind. If given the time, sitting down to experience "The Icarus Plot" is one well worth the while.



PHOTO CREDIT: AMAZON

"The Icarus Plot" was released July 5, 2022.

'Nosferatu' reimagines gothic horror

JADEN ELMORE
ASST. TEMPO EDITOR

When it comes to Hollywood, there is a spectrum of movies that are produced. Whether it is drama, horror, comedy, action, or thriller, the films are highly anticipated by fans. What makes a movie more exciting is when it has actors/actresses that people know and love.

A great example is the recent film released on Christmas Day, "Nosferatu," directed by Robert Eggers. Eggers is known for his work on movies such as "The Northman," "The Lighthouse" and "The Witch."

The movie stars actress Lily-Rose Depp, known for her role as Jocelyn in the 2023 show "The Idol", and actor Bill Skarsgård, known for portraying the ancient evil clown in the 2017 horror/mystery film "It."

In the movie, Egger shows the portrayal of Count Orlok, a Transylvania nobleman who lives in a secluded castle in the Carpathian mountains. Count Orlok's origin dates back to the original film in 1922, "Nosferatu: A Symphony of Horror."

The film follows Thomas Hutter, played by Nicholas Hoult, a young real estate

agent, who is sent to Transylvania to finalize a property sale for his employer. The buyer is Count Orlok, played by Skarsgård, who lives in the Carpathian Mountains. Hutter's visit with Orlok takes a turn when he realizes Orlok is not what he assumes him to be.

Hutter's connection with Orlok worsens the mental and physical health of his wife, Ellen Hutter (Depp), as Orlok has a deep desire and dark intentions with her. Ellen has become the vehicle for his destruction. It is revealed that Ellen is the "chosen victim" for Count Orlok's liking.

Eggers' direction for the film was to not only remake the original "Nosferatu" film but to give more emphasis on emotion in his version. Orlok, who is already portrayed as a monster, is more than that in this film. He was the representation of fear himself, a sinister force that preys on innocence.

Eggers' way of displaying tension without too many jump scares but with a more sinister atmosphere is impressive. The pacing of this film started slow but gradually picked up towards the end.

The performances of Or-



PHOTO CREDIT: FOREIGNPOLICY.COM.

Lily-Rose Depp's character, Ellen, encountering Count Orlok.

lok in this film are something to acknowledge. With very minimal dialogue, Orlok relies on his presence and aura as a way to make the audience feel unsettled.

To further support that claim in the film, Ellen is isolated not only by Orlok's influence but also by a larger societal disconnection. Digging into her history, Ellen has childhood trauma as she suffers from epileptic attacks. She also suffers from the loss

of her mother at a very early age, with her father being left to raise her. In the film, she is also isolated from her husband.

This film not only modernizes the original 1922 film; it recontextualizes it. The power of loneliness, desire, and isolation feels as relevant in modern times as it did nearly a century ago.

Egger's "Nosferatu" is a more complex imagining of the original film. It takes in-

spiration from the classic but transforms it into something entirely new. The film includes beautiful, unsettling visuals with a deep exploration of fear and isolation. The sinister atmosphere, the exceptional performance by Skarsgård and the emotional complexity of Depp's performance make "Nosferatu" not only a horror film but also a work of art that will be cemented in movie history.

CAMPUS LIFE

Hidden gems around campus

STEPHANIE AGUILAR
CAMPUS LIFE EDITOR

Every college campus has its hotspots—the packed gymnasium on game days, the bustling dining halls at lunchtime and the lively student dorms. Beyond these glamorous hubs for student life, there seem to be hidden gems all over campus. Regardless if you’re a new student, commuter or resident, here are some underrated spots on campus that deserve some recognition.

Wellness Room

In the basement of Mother Theresa Hall, students can find the Student Wellness Center, a hub for all things medical on campus. The Student Wellness Center also provides a safe space for students dealing with emotionally challenging times.

As a component of the Student Wellness Center, the Wellness Room serves to provide students with a space where they can decompress and relax. In the Wellness Room, students can use a luxury massage chair and have access to an array of essential oils. There is also a vitamin D light available for students who find it supplemental to their health, especially those struggling with seasonal depression.

The Wellness Room fosters a quiet environment with subtle lighting, avoiding the harsh fluorescent lights that

can hinder relaxation. Students also can scan a QR code that leads them to a meditation app and insight timer.

Brent and Jean Wadsworth Plaza and Fountain

Located right outside Charlie’s Place, between the Academic Science building and Oremus Fine Arts Center, lays the serene Brent and Jean Wadsworth Fountain.

Opened in October of 2014, the plaza provides a space for students to enjoy the calmness of outside and relax on what can be a very overwhelming campus at times.

The three-tiered fountain operates during the warmer months of Spring and Summer, but can still be enjoyed during the colder months of the year. The sound of trickling water mimics the flow of streams in nature, providing residents an escape from the scholarly world of the university. Students can sit on the edge of the fountain and enjoy conversation with friends, or grab a book and get lost in its pages.

Courtyard Cafe Starbucks

Caffeine is a must-have for a lot of students, but is not always available early in the mornings. Residents don’t always have the courtesy of having their own coffee brewers, and commuters sometimes can’t squeeze a quick coffee run in before classes. Thankfully, the Courtyard Cafe in De La Salle Hall has



VANJA BOGDANOVIC / PHOTOGRAPHER

Amenities in the Wellness Room, located in the Student Wellness Center, in the basement of Mother Theresa Hall.

the solution to these minor inconveniences: Starbucks.

Operated by Sodexo workers, the Starbucks booth in the Courtyard Cafe offers popular menu items for students to get much needed refreshments without having to leave campus. From frappuccinos to refreshers, students have access to the biggest staples in the coffee industry. After grabbing a nice cup of joe, students can have a seat in the cafe or out in the courtyard and get on with their studies while drinking their Starbucks.

The Library’s Quiet Corner

While the library may not

be the hidden gem on Lewis’s campus, there are some elements in the library that some students may not be aware of—that they definitely should be.

One of those elements is The Quiet Corner. Adjoined in the corner between the writing center and the North doors on the main level, students can escape to The Quiet Corner.

Provided to students are luxurious couches and chairs, as well as themed coloring pages for students to take as they go. Although the library is already a quiet environment, The Quiet Corner provides a secluded space for

students to relax and do their studies without the casual traffic that the rest of the library experiences.

While there are a ton of fun amenities that Lewis provides for its students, it is always fun to explore the campus for hidden gems. Hidden gems aren’t only good for being unique to each campus, but provide students a sense of individuality, utilizing spaces not commonly known among the community. Next time you take a walk around campus, keep an eye out for the nooks and crannies that you may have not noticed before.

PAWsome Community Hour: Puppy Bowl

DELANEY COLEMAN
CAMPUS LIFE ASST.

During community hour on Feb. 5, the Puppy Bowl was hosted in the field house in celebration of the Super Bowl with many activities for student engagement. In celebration of Valentine’s Day, students were able to decorate crush cans for their crush, get stickers and bracelets from the various booths and create friendship bracelets. Sodexo also offered walking tacos with a five dollar discount.

The University Ministry and Mission were present promoting their retreat to Koinonia and offering a raffle prize of a free ticket to go on the trip. The original cost was two hundred and fifty dollars, but Lewis was generously able to lower the costs to include more students who want to go.

Students were able to spin a wheel to win various prizes such as Celsius, apple sauce, coffee, pens, lip balm and a



VANJA BOGDANOVIC / PHOTOGRAPHER

Students Mary Ann Shurilla (middle) and Jessica Plewa (right) taking selfie with Jett and Officer Lyle Nettles (left) at Jett’s kissing booth

t-shirt. The University Ministry mentioned that they may be back for next week’s community hour to give students another chance to win those prizes!

Ruby Whiskers Animal Rescue supplied the puppies.

Ruby Whiskers is a nonprofit organization based in Lemont, Ill. Their mission is to be a voice for the animals and provide love, care and shelter for animals who have never had a home, or for those who were surrendered. They are

determined to find forever homes for all pets.

The event was an amazing opportunity for the Photography Club to allow their members to take many pictures of students playing and snuggling with the puppies. All students were excited to be photographed with the adorable puppies.

But Jet, the campus comfort canine, was not to be forgotten about, he and Finley, the campus therapy dogs, made their appearances. Jet was followed by a flock of Lewis police officers who spent the afternoon gushing about him, of course, but also keeping an eye on the students.

It was hard for some of the students to leave the puppies behind and not attempt to smuggle them home. Jet did let his handler know that he was not amused by his kissing booth by trying to escape and lay down on the floor. It took some convincing from some of the students to get him to sit still for pictures,

but his lovable face and kisses made it all worth it.

Chase Creed, a freshman special education major, commented, “This is a great way to get the community involved while also supporting a small business.” Students were seen donating cash and money through Zelle to help the furry friends find forever homes. “I hope that other clubs take note of how popular this was and do something similar,” Creed suggested. Most students would agree that animals are a great hook to reel in student engagement.

Needless to say, the Puppy Bowl was a grand success. Students and staff who participated are eternally grateful to the Rescue and Lewis for offering this chance to take a break from studying and working rigorously. Making crafts with friends and feeling the love from tiny fur babies encouraged the spirit of Valentine’s Day to shine through.

Chill vibes, hot opportunities: The Winter Engagement Fair

STEPHANIE AGUILAR
CAMPUS LIFE EDITOR

As students adjust to the start of a new semester during the bitter cold of January, there is no better way to welcome students back than the Winter Engagement Fair.

On Wednesday, Jan. 29 in the Recreation Center Field House, Lewis hosted the annual Winter Engagement Fair from 11 a.m. to 1 p.m., an extended community hour event.

As students entered the fieldhouse, they were greeted by the sound of today’s pop hits from student DJ, Tony DeNardis, and welcomed to a refreshment table where they could grab a warm drink such as hot chocolate. Comfort K9 Jett was also in attendance for students to take a break and show him some love.

The engagement fair is a great way for new and returning students to explore different clubs and organizations offered by the university, as well as learn information about upcoming events around campus. Booths at the engagement fair included the American Association of Airport Executives (AAAE), Student Senate and Best Buddies.

The engagement fair is not just catered towards resident students but also commuters. A common issue for commuter



VANJA BOGDANOVIC / PHOTOGRAPHER

Students engaging with different clubs available at Lewis.

students is that they feel they can’t enjoy the same programs and activities because they are not on campus 24/7, or they may just not be aware of what programs are available, but that’s what the engagement fair is for. Even if students don’t join any clubs right away, exposure to what’s available to them can encourage future involvement.

“I think the student engagement fair gives students the opportunity to engage and connect with clubs that students might not know exist on campus. And gives them

the chance to explore activities they may have not otherwise done before,” described Emma Teo, a senior Physics major and social coordinator for the Asian American Association.

Aside from clubs and organizations, Greek life was also represented throughout various booths at the fair. Fraternities and sororities encouraged students to stop by their tables and learn about the different chapters offered to students at Lewis.

Crystal Malone, president of Alpha Kappa Alpha Sorority, explained that “the student en-

agement fair allows us to connect with new students, different students, and allows us to share more information about our organization.”

Coming to the engagement fair can be an overwhelming experience. A tip for when attending is to keep an open mind. Although many clubs and organizations may immediately grab your attention, an open mind may lead you to find new passions and hobbies. Another tip: bring a friend. Walking around alone can feel odd, but having a friend to explore or join a new activity

with can be fun and reassuring.

Though many clubs are created to embrace diversity and spread representation throughout the Lewis community, any student can join and support an organization. Many organizations celebrate diversity among members to encourage inclusivity on campus.

“We had 10 to 15 students stop by our table, from all different types of majors and backgrounds. We were just really excited to meet everyone,” says Malone.

If a student is unsure about joining an organization right away, but still wants information, a good idea is to sign up for texting and email lists. That way, they can take time on their own to consider if a club is right for them. Talking to club representatives also provides students with detailed information that may not be available online or through handouts.

If someone did not get the opportunity to attend the engagement fair, there is no need to worry. Students can access a list of programs and organizations offered to students through the Lewis website, under the “Student Life” tab, or students can contact the The Office for Student Engagement and Multicultural Student Enrichment (SEMSE) at StudentActivites@lewisu.edu.

Campus Crossword

Down

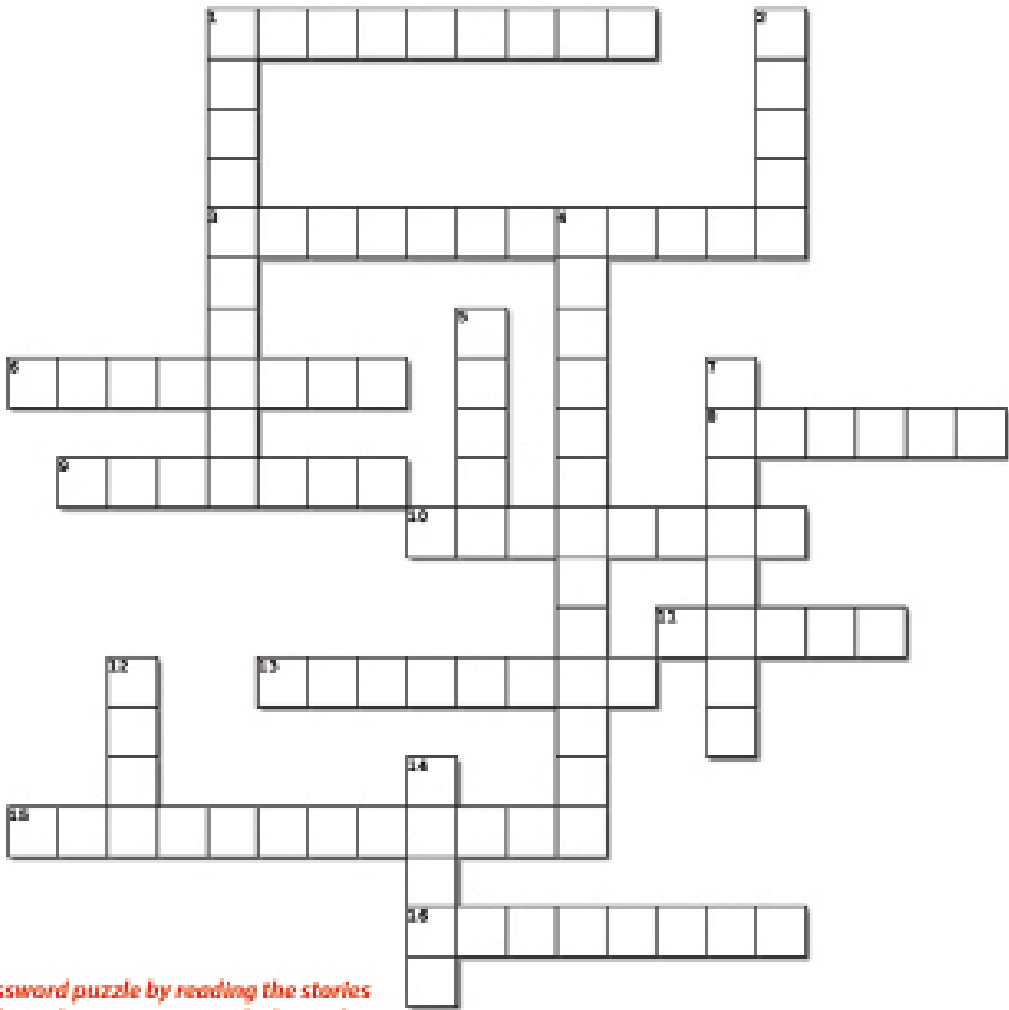
1. The faculty in charge of the programs have extensive _____ and knowledge.
2. What is one of the age groups that are most affected by social media?
4. The name of the second expansion pack of "Disney Dreamlight Valley."
5. Who issued the email to the Lewis University community?
7. What type of supplement does the light in the Wellness Room provide?
12. Alicia Keys said, "DEI is not a threat, it's a _____."
14. What College is Criminal Justice under?

Across

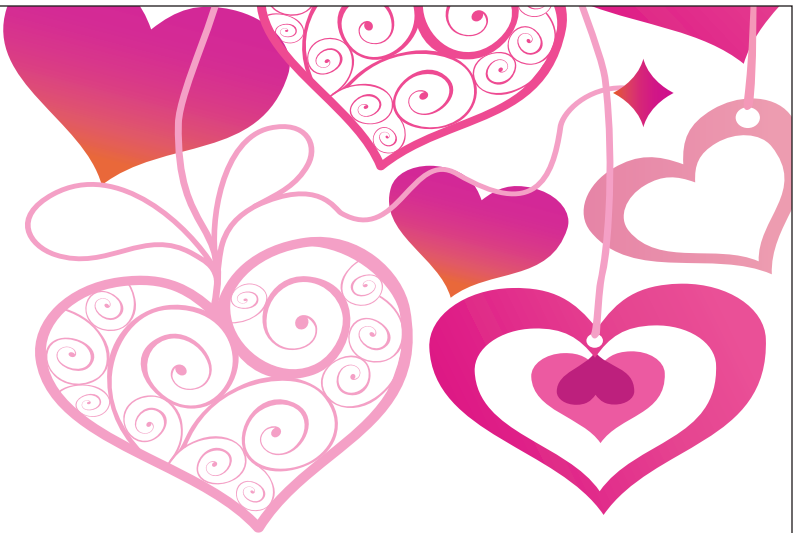
1. 'Ellen has childhood trauma as she suffers from _____ attacks.'
3. What animal rescue sponsored the Puppy Bowl?
6. Who was the Mayor that enacted the Welcoming City Ordinance?
8. What GLVC title did the men win last year in 2024?
9. Who was the men's lacrosse GLVC Specialist of the Year?
10. What species is Selene?
11. Nico Paula is what place in the nation in digs?
13. Moreover, it is very important to emphasize on the _____ support system at Lewis, especially for international students.
15. What drink could students grab at the fair?
16. What women's sport started in 1978?

RULES:

- Complete the crossword puzzle by reading the stories
- Return completed puzzle to room JP-012 before Feb. 20
- First 3 winners to present a completed puzzle win a gift card



HOPE & LOVE



◆ are best when shared ◆

DONATE BLOOD

**Wednesday
February
26**

9:00AM - 2:00PM



**Helpful tip:
Make sure to eat a healthy
meal and drink plenty of
water before donating.**

STUDENT NURSES ASSOCIATION OF LEWIS UNIVERSITY

**LOCATION: UNIVERSITY DINING ROOM
Route 53, Romeoville 60446**

APPOINTMENTS PREFERRED/WALK INS WELCOME

**Please book an appointment online using the QR Code
attached:-**

Recive a \$10 e gift card for donating.

**Every donor impacts 3 lives in the Community.
Make a difference today.**

PHOTO ID REQUIRED



 **THELEWISFLYER**

SPORTS

Track and field is back in action

CHRISTIAN GOODE
SPORTS CONTRIBUTOR

As students return for the spring semester, a new wave of sports are coming into their own respective seasons. One of those sports is track and field. With both the men’s and women’s teams working hard in the offseason to prepare, students are excited to see how they will perform this year.

Men’s and women’s head coach Dana Schwarting has been working as the head coach at Lewis for 20 years. His combined experience and wisdom has helped mentor many athletes over the past two decades. The two teams are working hard and striving for a new season full of potential and championship aspirations.

Both teams came off of a strong finish in the 2024 season. The women’s team won both the indoor and outdoor GLVC titles. The men’s team won the indoor GLVC title and was the runner-up for the outdoor title.

These feats secured the men’s 6th total title and the women’s 11th overall.

“It was nice to get back on top, so we are just looking to

build on that this year and being able to celebrate together,” said Schwarting. “We have four weeks until our conference meet so now we expect a lot of our kids to start hitting lifetime PRs and season bests building up to conference and then taking a good group to nationals.”

This season the men have nine new freshmen and the women 11. As the years progress, fans will be able to watch these athletes get better and grow into significant competitors. Schwarting noted many athletes improved as freshmen and sophomores to the point that they are now making impacts on the team as juniors and seniors. There has also been an influx of transfers from other colleges or universities.

Schwarting noted a few of many outstanding players who are making an impact on the team. “Enoch Antwi is a jumper that came in this semester, and he just jumped the 10th best jump in the country in the triple jump.

Levi Gram is top 3 in the country in weight throw, Evan Horgan in the 5K, Hannah Smrcka in the 5K, Anna Kozak in the mile, Denise Hernandez

in the long jump, Abraham Christian in the high jump,” said Schwarting.

All around this team is gearing up to create a legacy known for a long time. From jumpers and runners, to sprinters and throwers, each one is contributing to the team in order to propel it forward and far into the season.

“I am pretty excited, it’s my first college season,” says Neil Erasmus, a freshman hurdler and pole vaulter studying computer engineering. “I have seen up to this point a lot of progress, so it’s made me excited to see what I can do.”

The road ahead has some tough competition from conference teams like Lincoln University of Missouri, University of Indianapolis and Missouri S&T.

Those schools, as well as national level teams like Grand Valley State University, Adams State and West Texas A&M, these schools compete at the highest level and pose a substantial threat against the track and field team at Lewis. Fans are eager to see how far the Lewis teams will go and how they will face off against these powerhouse teams.

“I think taking care of ath-



MATTHEW CARLSON / PHOTOGRAPHER

Chase Creed preparing his throw at practice.

letes will be the hardest part of the season, we put our bodies through a lot of stress daily,” says Erasmus, “There’s usually a lot of injuries in track so I think the hardest part will be preventing those injuries and staying healthy.”

Going forward all of Lewis and its fans can expect a strong and exciting season from these

athletes.

With the next meet on Valentine’s Day weekend, they will be traveling to Allendale, Mich.

To compete against some of those strong teams. As they work hard each and every day they are focused on the finish line and making sure that they are the ones to cross it first.

Men’s lacrosse is hungry for more

GRANT DORSEY
SPORTS EDITOR

To start the season, men’s lacrosse is ranked in the top 13 in all NCAA Division II preseason polls. They are ranked 10th in the USA Magazine poll, 11th in the Inside Lacrosse poll and 13th in the United States Intercollegiate Lacrosse Association poll. This comes after a NCAA Division II first round tournament win, a GLVC conference championship and a regular season title. The Flyers ended last season with a 20-3 loss to Tampa in the NCAA Division II Tournament Quarterfinals.

Despite losing in the quarterfinals, the Flyers had a historic season last year. The team finished with a program record 14 wins and touting a 5-1 conference record to secure the number one seed in the conference tournament. It was also the first time in program history that the team was selected to the NCAA Division II Tournament.

Head Coach Joe Perruzzi looks forward to proving they belong with the other top teams in the nation. The team will open their season in South Carolina, facing Newberry College and Limestone University ranked 14th and 4th. Lewis will face other ranked opponents this season, including India-

napolis, Maryville, Seton Hill, Rockhurst, and Westminster. The strong lineup will help prepare them for another chance to make the national tournament in May.

“I want to get this team back into that opportunity so that they can prove themselves on the biggest stage that we do belong there and that Lewis is going to be here for many years to come,” Perruzzi said.

The Flyers are returning many key players from last year, including Nolan Delap, Kevin Blaz, Tyler Davis, Malikye Good and Domenic Tarello. Davis was named to the All-GLVC First Team, along with being named to the USILA All-South Region Third Team and being named an All-American honorable mention. Tarello was named Specialist of the Year from the GLVC and was an honorable mention in the USILA All-South Region.

Blaz was named one of the captains for this season. The criminal justice major from McHenry, Ill, is playing in his fifth and final season. He is a four-time Delahanty Award winner and has scored 38 goals in his time as a Flyer. Even though some key members from last season graduated, there are a lot of new members who can become the missing



GRANT DORSEY / SPORTS EDITOR

Captain Kevin Blaz, No. 6, celebrating after scoring against Maryville.

piece to the puzzle.

“I’m most excited about the group of guys we’re coming in with,” said Blaz. “There’s a lot of new faces who have fully brought into the culture and made our team and chemistry better.”

Perruzzi added some new players from the transfer portal, including Jackson Maridini, Henri Marindin and Leo Dunlap.

J. Marindin played at Harford Community College be-

fore transferring to Lewis. He is a two-time NJCAA National Champion after securing back to back titles at Harford.

That program won its first ever national title in men’s lacrosse in 2023, and J. Marindin scored in both national championship games.

H. Marindin joined the team in September after transferring from University of Lynchburg. Not long after his arrival, he was named one of the captains for this season.

The GLVC title is up for grabs, with four teams vying for the championship. No team has gone back to back, and Lewis wants to be the first to do it. In the GLVC preseason rankings, Lewis and Maryville are tied for first place, each receiving 3 votes.

Men’s lacrosse first game back at home since last season’s NCAA First Round victory took place on Feb. 20 against Davenport University at 1 p.m.

Recognizing over 50 years of women’s sports at Lewis

GRANT DORSEY
SPORTS EDITOR

This year, Lewis celebrates the 50th anniversary of the inclusion of women’s sports at the university.

Women’s athletics was announced in 1973, and volleyball and track were the first sports announced.

The two sports were chosen after a vote was taken by the athletic department to determine if enough women were interested in competing in intercollegiate athletics.

The result of that 1972 poll, catapulted the start of women’s athletics at the university.

Three sports would follow; basketball in 1974, tennis in 1975 and softball in 1978. Track would later be discontinued by the university in the late 1970s.

It was a while before a new women’s sport was added. Soccer began competing in 1986 and track was brought back that year.

The following year, softball started competing on the intercollegiate level, having previously only been an intramural sport.

Lewis has witnessed coaching and athletic greats since the inception of wom-



TEAM; TOP ROW, Kathy Dyer, Dawn Ankiewicz, Linda Tidwell, Ruby Gray, Leah Latasiewicz, Linda Morales, Cathy Cwiklik, Sandy Jaeger, Coach Cathy Shiely, Denise Clowik (Trainer). SECOND ROW, Pat Williams, Cheryl Zenere, Glenda Hurt, Denise Duffy, Debbie Kabara, Julie Wargacki, Kathy Sniegoeki. FIRST ROW, Joan Golden, Phylis O'Toole, Anka Krstic, Kathy Lavrsen, Pat Garretano.

PHOTO CREDIT: ED HARTIG

The 1974 Lewis women’s volleyball team, the first women’s volleyball team in Lewis history.

en’s sports. Coach Cathy “Tat” Shiely was the founder of women’s volleyball, women’s basketball and women’s track.

She would leave Lewis after one year to start women’s volleyball and women’s basketball programs at Marquette University.

The 1981 women’s volleyball team was the first and only Lewis women’s volley-

ball program to appear in the NCAA Division II National Championship game. That season, the team won 51 games, a school record. Karen Lockyer, the women’s volleyball head coach and a Lewis Hall of Famer, led the team through these achievements.

In recent years, several dynasties have been created. Since 2021, women’s volley-

ball has not lost the GLVC title.

The women’s cross country team has won conference championships since 2022.

Newer sports, like women’s bowling, women’s lacrosse, and most recently, STUNT, have the opportunity to help the women’s sports landscape grow on the collegiate level.

Women’s lacrosse play-

er Olivia Paterson, a senior sport management major, has been a part of the program since the sport was added to Lewis in 2019.

“The growth of women’s athletics across the collegiate level is something to be celebrated,” Paterson said. “I’m always grateful to be competing at this level.”

STUNT, a sport that was launched this spring, paves the way for more female athletes at the university. STUNT is considered to be one of the fastest growing female sports in the country, currently with 74 collegiate teams that span across the NCAA, NAIA and junior college level.

The GLVC will officially sponsor the sport in the 2025-2026 school year. Head coach Kaitlyn Van Hekken leads the Flyers in the inaugural season.

“As a former athlete and now coach of STUNT, it is amazing to see the sport grow into what it is today,” Van Hekken said. “I am a huge advocate for female sports, so to be able to see a new sport created from the foundations of cheerleading grow and thrive at the collegiate level is really special.”

PLAYER PROFILE

MAX ROQUET



Senior | Marketing Major

STATISTICS

AVCA Honorable Mention All-American in 2024
Jan. 28 MIVA Offensive Player of the Week
33 kills, a Lewis program record vs. Mount Olive on Jan. 24
Hitting at 0.353%
Averaging 16.31 ppg.

Q
&
A

What made you choose Lewis?

I chose Lewis because of the people here and the personal feel the college had.

How do you get in game mode?

I get in game mode by watching film, warming up, and getting my game day coffee.

What is your go to pregame song?

My go to pregame song is probably Leave the Night On by Sam Hunt



Men’s volleyball sets the stage for a promising spring season

KREE NUNNALLY
SPORTS CO-EDITOR

Currently ranked 12th in the nation, men’s volleyball is off to a hot start. Starting the season with a record of 8-2. Their players are ranked, their mindset is resilient and they are determined to mark this year as theirs. Though the Flyers took a loss to them in a five set battle last season, they came out on top of Penn State this year in one clean sweep. Penn State was their first ranked win of the season which helped move the Flyers from being ranked 14th to 12th. So far, Long Beach State and Pepperdine, ranked No. 2 and No. 10, are the only opponents to have snuffed the Lewis flame. The Flyers are coached by Dan Friend, who is decorated in accolades. He has been coaching at Lewis for 21 years and counting. With a win against Lindenwood, Friend now sits at 400 career wins with Lewis. Redshirt freshman finance major Frederick Krueger-Beer said, “I’m super grateful to be able to play for Coach Friend.



GRANT DORSEY / SPORTS EDITOR

Lewis men's volleyball team celebrates point.

He’s instilled in me to give it my all every day, whether it’s practice, the classroom, the weight room and especially in games.” Among the NCAA Division I and Division II schools, Friend is ranked fourth overall for total wins. He also holds a total of five NCAA tournament appearances.

Friend has led men’s volleyball to four final four appearances and one NCAA Runner-Up Finish in 2015. This year, hitters like Roquet and Oguzhan Oguz are tearing up their opponents while leading their team in kills. Roquet has a total of 124 kills and Oguz is sitting at 120 kills so far this season. They are both in the top 20

national leaders of kills per set. The team also has middle back red-shirt freshman Frederick Krueger-Beer showing up in key plays, so far achieving a total of 49 kills. With these heavy hitters, the Flyers are sixth in the nation hitting percentage and kills per set. These kills would be nothing without the 352 assists from senior setter Tyler Morgan. Lewis is ranked fifth in the nation in assists per set. The senior leads the nation in assists per set having more than 100 assists than the number two leader. On the defensive end, Nico Paula is consistently putting his body on the line as he is sixth in the nation in digs and leads the team with 87 digs on the season. Blocks coming from Oguz and Roquet, as well as Daniel Haber, Shawn Baggs and Piotr Wymoczyl, have been core features in these Flyer wins, keeping their opponents from landing necessary points. They combine for a grand total of 80 blocks. So far, men’s volley has been able to put teams away early, while only having one game go into five sets. Roquet said they are focused on “not dwelling on the bad things and just playing free.” Their veteran leadership and drive to win is guiding the Flyers to this fiery, ranked, start.

SPORTS RECAP JAN 23 TO FEB 5	WOMEN'S SPORTS	BASKETBALL 1/23 vs. Southwest Baptist University Romeoville, Ill. W: 77-53 1/25 vs. Rockhurst University Romeoville, Ill. L: 85-86 1/30 @ Missouri S&T Rolla, Mo. L: 74-76 2/1 @ Drury University Springfield, Mo. W: 69-67	SWIMMING 1/25 vs. University of Missouri St. Louis Lebanon, Ill. W: 183-88 1/25 vs. McKendree University Lebanon, Ill. L: 123-173 TENNIS 2/2 vs. Roosevelt University Lockport, Ill. L: 3-4	VOLLEYBALL 1/24 vs. University of Mount Olive Romeoville, Ill. W: 3-2 1/25 vs. Missouri S&T Romeoville, Ill. W: 3-0 1/31 @ UC Santa Barbara Santa Barbara, Calif. W: 3-1 2/1 @ Pepperdine University Malibu, Calif. L: 0-3 2/5 vs. Lindenwood University Romeoville, Ill. W: 3-1
	MEN'S SPORTS	BASKETBALL 1/23 vs. Southwest Baptist University Romeoville, Ill. W: 71-57 1/25 vs. Rockhurst University Romeoville, Ill. W: 78-67 1/30 @ Missouri S&T Rolla, Mo. W: 59-49 2/1 @ Drury University Springfield, Mo. W: 75-73	SWIMMING 1/25 vs. University of Missouri St. Louis Lebanon, Ill. W: 130-129 1/25 vs. McKendree University Lebanon, Ill. L: 92-168 TENNIS 2/2 vs. Roosevelt University Lockport, Ill. W: 5-2	SOFTBALL 2/3 vs. Hillsdale College Hawaii W: 7-6 8 innings 2/3 vs. Ferris State University Hawaii W: 8-1 2/4 vs. Hillsdale College Hawaii L: 2-3 2/4 vs. Cal Poly Humboldt Hawaii L: 0-10 5 innings